

## About Our Formwork Accessories & Equipment

Rebar, Mesh and Construction Supplies (Pty) Ltd is the number one supplier of formwork accessories, specialised tools and equipment to the construction industry in Africa. We carry a large variety of rebar spacers, rebar cutters and benders, lifting equipment, safety netting, rubble chutes, brick baskets, daga mixing trays, waterproofing membranes, joint formers, shutter strip formwork joint sealer, K-Form screed rails and much, much more. Browse our website and you will be surprised to see what products we offer to make your job a lot easier on site.



Products from Rebar, Mesh and Construction Supplies (Pty) Ltd have been used in some of the largest projects in South Africa and the African Continent.

Contact us now on +27 (0)11 310 8660, +27 (0)11 310 7113 or +27 (0)72 459 7063.  
 You can also email us at [sales@rmcs.com](mailto:sales@rmcs.com)

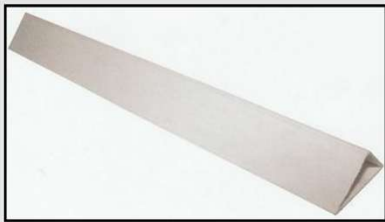
571 Setter Road, Commercial, Midrand, 1683

## About Our Formwork Chamfers & Corner Fillets



Rebar, Mesh and Construction Supplies (Pty) Ltd supplies a wide range of corner fillets or chamfers to the construction industry. Formwork chamfers or corner fillets are used to bevel corners of cast concrete such as beams, columns, slabs or pre-cast concrete products. Our plastic chamfers are made from durable ABS and can be re-used a number of times. Our magnetic chamfers are made from steel and can be re-used many times.

### Chamfers / Corner Fillets without lip



Product codes and sizes:

Product Code	Corners Width	Chamfer Size	Stock Length
T-1-15	15mm	25mm	3 meters
T-1-20	20mm	28mm	3 meters
T-1-25	25mm	35mm	3 meters

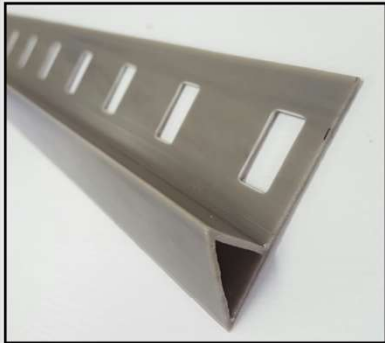
### Chamfers / Corner Fillets with lip



Product codes and sizes:

Product Code	Corners Width	Chamfer Size	Lip Size	Stock Length
T-4-15	15mm	25mm	25mm	3 meters
T-4-20	20mm	28mm	25mm	3 meters
T-4-25	25mm	35mm	25mm	3 meters

### Chamfers / Corner Fillets with Metric slotted lip



Product codes and sizes:

Product Code	Corners Width	Chamfer Size	Lip Size	Stock Length
T-2-15	15mm	25mm	50mm	3 meters
T-2-20	20mm	28mm	50mm	3 meters
T-2-25	25mm	35mm	50mm	3 meters

### Chamfers / Corner Fillets with PMI slotted lip



Product codes and sizes:

Product Code	Corners Width	Chamfer Size	Lip Size	Stock Length
T-3-15	15mm	25mm	50mm	3 meters
T-3-20	20mm	28mm	50mm	3 meters
T-3-25	25mm	35mm	50mm	3 meters

## About Our Formwork Chamfers & Corner Fillets



Rebar, Mesh and Construction Supplies (Pty) Ltd supplies a wide range of corner fillets or chamfers to the construction industry. Formwork chamfers or corner fillets are used to bevel corners of cast concrete such as beams, columns, slabs or pre-cast concrete products. Our plastic chamfers are made from durable ABS and can be re-used a number of times. Our magnetic chamfers are made from steel and can be re-used many times.

### Frami Chamfers / Plasti Corner Fillets



Product codes and sizes:

Product Code	Corners Width	Chamfer Size	Stock Length
T-F-28	20mm	28mm	3 meters

### Tifa Chamfers / Plasti Corner Fillets



Product codes and sizes:

Product Code	Corners Width	Chamfer Size	Stock Length
T-5-25	25mm	35mm	3 meters

### Steel Chamfers / Corner Fillets



Product codes and sizes:

Product Code	Corners Width	Chamfer Size	Stock Length
TS-1-15	15mm	25mm	3 meters
TS-1-19	19mm	25mm	3 meters
TS-1-25	25mm	35mm	3 meters

### Magnetic Chamfers / Corner Fillets



Product codes and sizes:

Product Code	Corners Width	Chamfer Size	Stock Length
NSM-15A	15mm	25mm	3 meters
NSM-20A	19mm	25mm	3 meters
NSM-25A	25mm	35mm	3 meters

## About our Custom Formwork Ferrule Tubing ID 22 / OD 25mm

### Custom Formwork Ferrule Tubing

Formwork Ferrule Tubing is used to space shutters and to recover expensive formwork shutter tie rods.

Our custom Formwork Ferrule Tubing is made for 16mm diameter tie rods and supplied at the exact length required. They are supplied with end cones at both ends of the ferrule tubing. Our custom Formwork Ferrule Tubing are robust and the end cones which are included are manufactured to a superior quality to any other end cones available in the market. This ensures that failure of the ferrule tubing and end cones, which results in the tie rods getting lodged in the concrete, is eliminated.

The benefits of utilising Custom Formwork Ferrule tubing are:

1. The concrete structure being consistent and equidistant throughout,
2. Time saved on site by not having to perform the tedious task of cutting lengths of ferrule tubing,
3. Waste of ferrule tubing due to cutting errors and off-cuts, is eliminated,
4. Increased quality of concrete pours results in reduced rework, thereby saving time and money and
5. Money is saved because instances of tie rods getting stuck in concrete is greatly reduced.

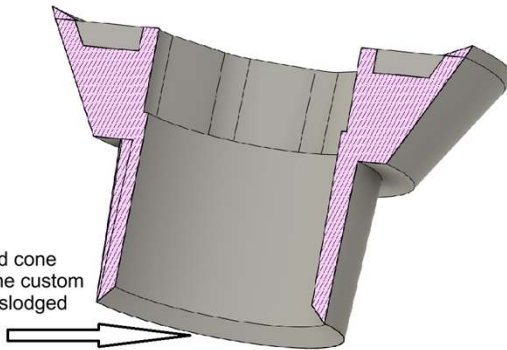


#### Product codes and sizes:

Product Code	Custom Tube Length	Inside Diameter	Outside Diameter
CFT150-22-25	150mm	22mm	25mm
CFT200-22-25	200mm	22mm	25mm
CFT230-22-25	230mm	22mm	25mm
CFT250-22-25	250mm	22mm	25mm
CFT300-22-25	300mm	22mm	25mm
CFT350-22-25	350mm	22mm	25mm
CFT400-22-25	400mm	22mm	25mm
CFT450-22-25	450mm	22mm	25mm
CFT500-22-25	500mm	22mm	25mm

#### Special Feature of our Custom Ferrule Tube end cone

A featured chamfer in the Ferrule end cone prevents the cone at the far end of the custom ferrule tube from unwittingly being dislodged when the tie rods is inserted through the ferrule tube.



## About Our Ferrule Tubing and Push-on Cones (end cones)

Formwork ferrule tubing and ferrule end cones are used to space shutters and to recover expensive formwork shutter tie-rods. The inside diameter of the Ferrule tubing needs to be at least 1mm greater than that of the tie-rod being used to fix the formwork shutter. Ferrule tubing end cones are inserted at each end to seal off the hole in the shutter. Made from ABS plastic.

### Formwork Ferrule Tubing



#### Product codes and sizes:

Product Code	Inside Diameter (mm)	Outside Diameter (mm)	Meter Lengths
C-1-20	17	20	3
C-1-25	22	25	3
C-1-30	26	30	3

### Formwork Ferrule end Cones

Ferrel end Cones are used as ends on Ferrel Tubing to space shutters for the thickness of the concrete casting. Fits on the inside of the Ferrel Tube. Can be removed after the shutters have been dismantled and be used again. Made from recycled polypropylene.



#### Product codes and sizes:

Product Code	Tube Inside Diameter (mm)	Tube Outside Diameter (mm)	Packaging Quantity
EC-1-20	17	20	2000
EC-1-25	22	25	2000
EC-1-30	26	30	1000
EC30-22-25	22	25	1000

The EC30-22-25 Ferrule Cone has a 30mm head.

Contact us now on +27 (0)11 310 8660, +27 (0)11 310 7113 or +27 (0)72 459 7063.  
You can also email us at [sales@rmcs.com](mailto:sales@rmcs.com)

## About Our Ferrule Push-on Cones (end cones)

### Formwork Ferrule end Cones

Ferrel end Cones are used as ends on Ferrel Tubing to space shutters for the thickness of the concrete casting. Fits on the inside of the Ferrel Tube. Can be removed after the shutters have been dismantled and be used again. Made from recycled polypropylene.



Product codes and sizes:

Product Code	Tube Inside Diameter (mm)	Tube Outside Diameter (mm)	Packaging Quantity
EC-17-20	17	20	1,000
EC-22-25	22	25	1,000
EC-26-30	26	30	1,000
EC30-22-25	22	25	500

The EC30-22-25 Ferrule Cone has a 30mm head.

### Formwork Permanent Push-on Ferrule Cones

Permanent Ferrule tubing cones are inserted at each end to seal off the hole in the shutter and permanently stays in the concrete after stripping of the formwork. It does not have to be removed after stripping the formwork and gives a good finish to the concrete.



Product codes and sizes:

Product Code	Tubing Inside Diameter (mm)	Tubing Outside Diameter (mm)	Packaging Quantity
EC-22-P	22	25	1,000 Pairs

**About Our Formwork Grouting Profiles or Trapesium**

Formwork Grouting Profiles or Trapesiums are used to create features on concrete walls or hide joints. Formwork Grouting profiles may also be used to form joints in concrete slabs.

Normally nailed, screwed or glued to the formwork or shutter.

Made from load bearing and durable ABS (Acrylonitrile Butadiene Styrene) plastic and if taken proper care of, be re-used a number of times.



**Product codes and sizes:**

Product Code	Top Size mm	Sides Size mm	Base Size mm	Stock Lengths
I-1-15	30	15	45	3 meters
I-1-25	25	25	30	3 meters
I-1-30	30	25	45	3 meters

**Water Stoppers or Water Bars**

Formwork Water Stoppers / Water Stops /Water Bars are used in concrete masonry construction of hydraulic structure to safeguard from hydrostatic pressure and water seepage.

Our Formwork Water Stoppers / Water Stops are made from malleable Casting and has a safe working load of 90 KN. Threading is suitable for 15/17mm DYWIDAG Tie Rod.

The standard Formwork water stopper is made to fit 26mm ferrule tubing, but plastic adaptors can be attached to fit 22mm ferrule tubes to the water stopper.



**Product codes and sizes:**

Product Code	Description	Units Per Bag
WSTOP15/17	Water Stopper - Forged Iron for DYWIDAG TIE ROD 15/17	25

**About Our Formwork Tie Rods, Nuts and Accessories**



RMCS supplies a wide range of Formwork accessories such as Tie rods and Tie Nuts to the construction and related industries. Weldable Dywidag Discontinuous Thread Formwork Tie Rods or Formties are used in construction Formwork to tie the formwork together. Tie Nuts, Combi nuts or Wing nuts are screwed on to the tie rods, to keep the formwork in place.

Our Dywidag tie rods have a discontinuous thread and is therefore a self cleansing tie rod. Concrete is removed from the rod, when the Combi nut or wing nut is removed from the tie rod.

We also supply a continuous thread tie rod, which is used for the same purpose, but the strength differs from that of the Dywidag Tie rod.

RMCS carries a large quantity of stock to ensure that we can service our customers at all times.

RMCS will cut to length on request.

**DYWIDAG Tie Rods - discontinuous self cleaning thread**

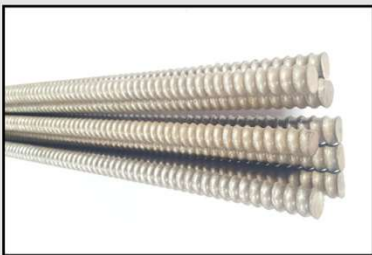


Product codes and sizes:

Dywidag Tie Rods	
Code	Description
DWTR16 1m	DYWIDAG TIE ROD 15/17, Weldable, HOT ROLLED, 1 Meter
DWTR16	DYWIDAG TIE ROD 15/17, Weldable, HOT ROLLED, 6 Meters
DWTR20	DYWIDAG TIE ROD 20/23, Weldable, HOT ROLLED, 6 Meters

Product Code	Ø [mm]	Steel Grade	Max Load [kN]	Working Load [kN]	Weight [kg/m]	Bar Length
DWTR16	15/17mm	St 900/1100	195	90	1,44	6 Meters
DWTR20	20/23mm	St 900/1100	345	160	2,56	6 Meters

**Tie Rods - continuous thread**



Product codes and sizes:

Product Code	Description
TR12	12mm Tie Rod (M12) 6 meter length
TR16	16mm Tie Rod (M12) 6 meter length

**Galvanised 15/17 Combi Wing Nut for DYWIDAG Tie Rod**



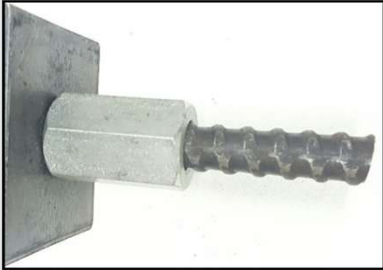
Product codes and sizes:

Product Code	Description
WN15/17F	Galvanised 15/17 Combi Wing Nut - Forged
WN15/17C	Galvanised 15/17 Combi Wing Nut - Casted

**About Our Formwork Tie Rods, Nuts and Accessories**



**Hex Tie Nut for DYWIDAG Tie Rod**



Product codes and sizes:

Product Code	Description
DWHN15/17/50	DYWIDAG 15/17 Hex Nut 30/50mm long
DWHN15/17/100	DYWIDAG 15/17 Hex Nut 100mm long
DWHN20/22/60	DYWIDAG 20/22 Hex Nut 60mm long

**DYWIDAG Tie Rod Wrenches**



Product Code : **DW10F71002G**

The DYWIDAG Tie Rod Wrenches are used to hold the Dywidag Tie Rod, in place, while the tie nut or Combi Nut is being tied on the formwork.

The DYWIDAG tie rod wrenches can be used on both the 15/17 and 20/23 Dywidag Tie Rods.

**Tie Rod Nuts**



Product codes and sizes:

Product Code	Description
TRN12	12mm Tie rod Nut
TRN16	16mm Thru Tie Nut

**Tie Rod Washers**



Product codes and sizes:

Product Code	Description
TRW12x75	M12 Tie rod Washers 75 x 75 x 6mm 14mm Diameter hole
TRW12x80	M12 Tie rod Washers 80 x 80 x 6mm 14mm Diameter hole
TRW16x80	16mm Tie Rod Washer 80 x 80 x 6mm 18mm Diameter Hole.
TRW15/17	15/17 DYWIDAG Tie Rod Washer 80 x 80 x 6mm 19mm Diameter Hole.

## About Our Ferrule Tubing and Push-on Cones (end cones)

Formwork ferrule tubing and ferrule end cones are used to space shutters and to recover expensive formwork shutter tie-rods. The inside diameter of the Ferrule tubing needs to be at least 1mm greater than that of the tie-rod being used to fix the formwork shutter. Ferrule tubing end cones are inserted at each end to seal off the hole in the shutter. Made from ABS plastic.

### Formwork Ferrule Tubing



#### Product codes and sizes:

Product Code	Inside Diameter (mm)	Outside Diameter (mm)	Meter Lengths
C-1-20	17	20	3
C-1-25	22	25	3
C-1-30	26	30	3

### Formwork Ferrule end Cones

Ferrule end Cones are used as ends on Ferrule Tubing to space shutters for the thickness of the concrete casting. Fits on the inside of the Ferrule Tube. Can be removed after the shutters have been dismantled and be used again. Made from recycled polypropylene.



#### Product codes and sizes:

Product Code	Tube Inside Diameter (mm)	Tube Outside Diameter (mm)	Packaging Quantity
EC-1-20	17	20	2000
EC-1-25	22	25	2000
EC-1-30	26	30	1000
EC30-22-25	22	25	1000

The EC30-22-25 Ferrule Cone has a 30mm head.

Contact us now on +27 (0)11 310 8660, +27 (0)11 310 7113 or +27 (0)72 459 7063. You can also email us at [sales@rmcs.com](mailto:sales@rmcs.com)

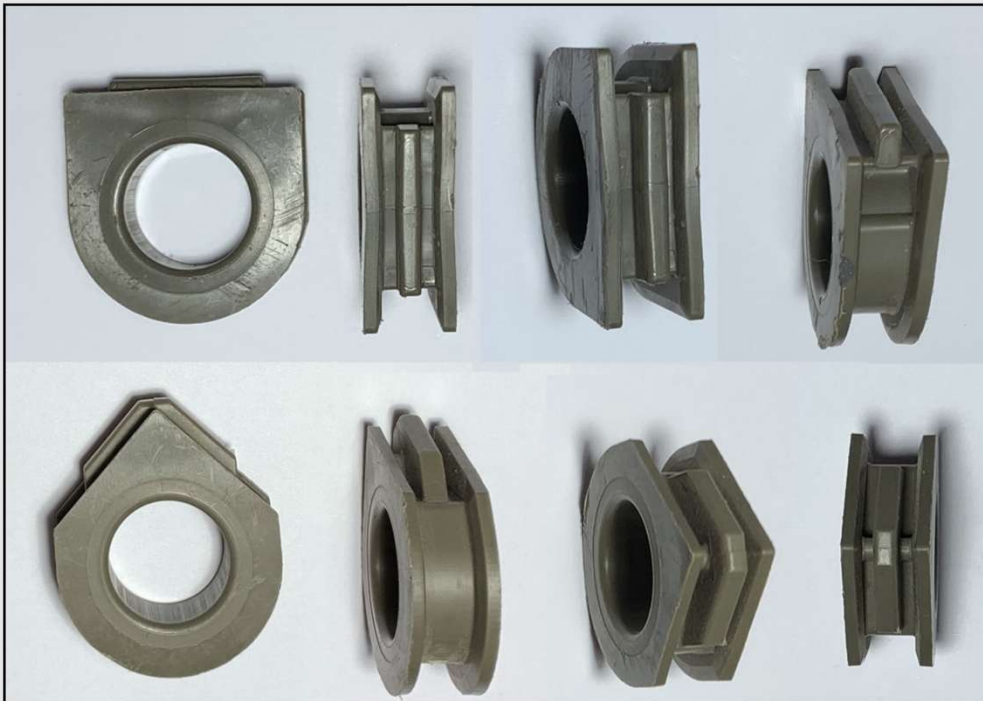
**About Our Outdoor Use 18mm & 21mm Shutterply Film Faced Shuttering Plywood**



Shutterply is mainly used for shuttering or formwork. It is film coated for exterior use. Shutterply can be used a number of times and may be repaired quite easily. You can use our tie rod hole repair plugs to repair tie rod hole in the corner and on the sides of the shutter plywood.

In addition to our shutter plywood, RMCS supplies a wide range of products for concrete formwork such as corner fillets or chamfers, ferrule tubing, ferrule cones, grouting profiles, DYWIDAG rods, tie rods, tie nuts, ferrule jacks and dollies, Groutex®, Jointex®, shutter buttons and shutter plugs, tie rod hole repair plugs, shutter oil, water stoppers, water stopper reducers and shutter tape.

**About Our Shutter Plywood Tie-rod hole repair inserts**



Tie-rod hole repair inserts are mainly used to repair worn tie-rod holes in the corners and the sides of shutter plywood used in formwork.

## Our Formwork Water Stoppers (Water Bars) and Shutter Tape

### Water Stoppers or Water Bars

Formwork Water Stoppers / Water Stops /Water Bars are used in concrete masonry construction of hydraulic structure to safeguard from hydrostatic pressure and water seepage.

Our Formwork Water Stoppers / Water Stops are made from malleable Casting and has a safe working load of 90 KN. Threading is suitable for 15/17mm DYWIDAG Tie Rod.

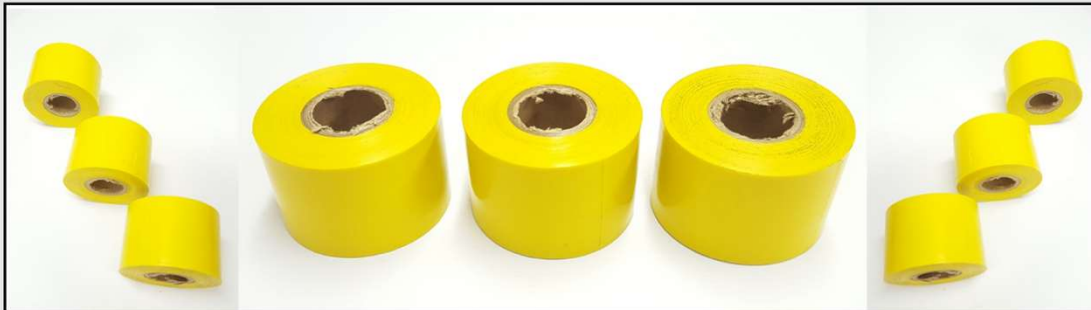
The standard Formwork water stopper is made to fit 26mm ferrule tubing, but plastic adaptors can be attached to fit 22mm ferrule tubes to the water stopper.



#### Product codes and sizes:

Product Code	Description	Units Per Bag
WSTOP15/17	Water Stopper - Forged Iron for DYWIDAG TIE ROD 15/17	25

### Formwork Shutter Tape



RMCS supplies quality shutter tape for formwork

**Formwork Shutter tape** is a pvc tape used for the sealing of joints in formwork to prevent grout loss or bleeding of concrete. Roll size 50mm x 30 meters.

Contact us now on +27 (0)11 310 8660, +27 (0)11 310 7113 or +27 (0)72 459 7063. You can also email us at [sales@rmcs.com](mailto:sales@rmcs.com)

## About Our Formwork Shutter Oil and Shutter Tape

### Formwork Shutter Oil

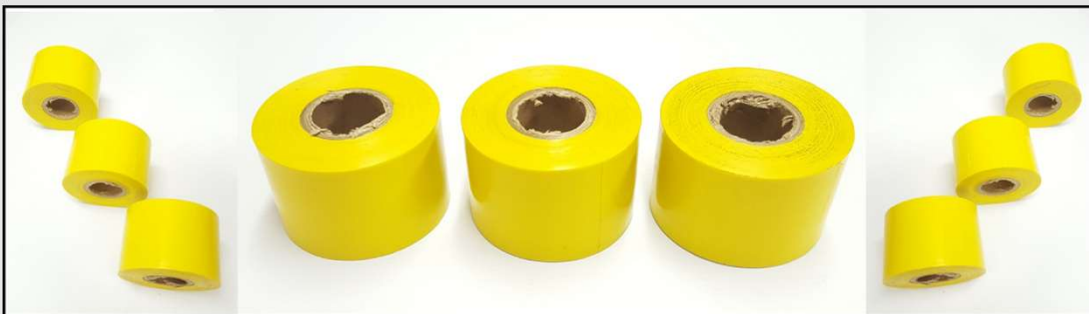


RMCS supplies quality Formwork / Concrete release agent or shutter oil for any requirement.

Shutter Oil or Concrete Release Agent is formulated to give easy release of concrete from plastic, rubber, wood or steel shutters or forms. Our Shutter Oil or Concrete release Agent provides a high quality surface finish to concrete.

- Concrete Release Agent is ready for use and should not be diluted.
- It should be applied as thinly and evenly as possible for optimum performance.
- It can be applied to all types of mould system by spray, fine-haired brush, swab or roller.
- Excess should be removed. For the best and most economical performance, application by fine fog spray is recommended.

### Formwork Shutter Tape



RMCS supplies quality shutter tape for formwork

**Formwork Shutter tape** is a pvc tape used for the sealing of joints in formwork to prevent grout loss or bleeding of concrete. Roll size 50mm x 30 meters.

Contact us now on +27 (0)11 310 8660, +27 (0)11 310 7113 or +27 (0)72 459 7063. You can also email us at [sales@rmcs.com](mailto:sales@rmcs.com)

**About Our Formwork Shutter Plugs and Shutter Buttons**



RMCS supplies a wide range of Formwork accessories such as Shutter buttons, shutter plugs, Vario button to the construction and related industries. Our shutter buttons and plugs are used to plug redundant or unused holes Formwork panels. Shutter buttons or plus are put into the holes by simply tapping them in with a hammer or pushing them in by hand.

Scroll down and see what types and sizes of formwork shutter plugs and buttons we supply. We carry a large quantity of stock to ensure that we can service our customers at all times.

**Shutter Buttons for Formwork Panels**

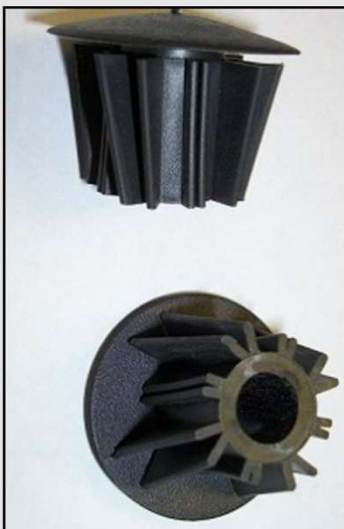


Shutter Buttons are used to plug unused holes in Formwork panels. They come in various sizes to fit various hole sizes on the Formwork panel.

Product codes and sizes:

<b>Product Code</b>	<b>Description</b>
SB14mm	Fits 12mm to 14mm holes
SB16mm	Fits 16mm holes
SB18mm	Fits 18mm holes
SB21mm	Fits 21mm to 22mm holes

**Formwork Vario Shutter Buttons 20-25mm**



Vario Shutter Buttons are used to plug unused holes in Formwork panels. Our Vario Shutter Button will plug unused hole sizes from 20mm to 25mm on the Formwork panel.

Product code and size:

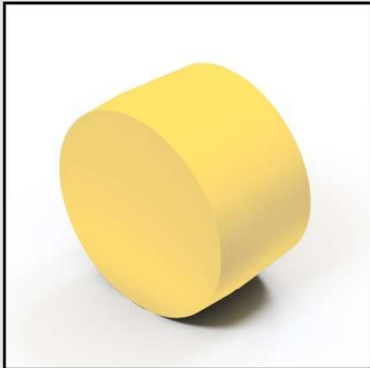
<b>Product Code</b>	<b>Description</b>
SB20-25MM	Shutter Buttons Vario / Plastic Buttons 20 -25mm holes

## About Our Formwork Shutter Plugs and Shutter Buttons



Rebar, Mesh and Construction Supplies (Pty) Ltd supplies a wide range of Formwork accessories such as Shutter buttons, shutter plugs, Vario button to the construction and related industries. Our shutter buttons and plugs are used to plug redundant or unused holes Formwork panels. Shutter buttons or plus are put into the holes by simply tapping them in with a hammer or pushing them in by hand.

### Formwork Frami Plug



The Frami Plug is used for sealing the unneeded form-tie holes in the formwork sheet of the universal panel. We carry two sizes in stock 24,5mm and 25mm. They taper from 22mm at the open end to 24,5mm or 25mm at the top.

Product code and size:

Product Code	Description
FRAMI-24.5MM	Frami Shutter Plug / Plastic plug 25mm holes
FRAMI-25MM	Frami Shutter Plug / Plastic plug 25mm holes

### Formwork Shutter Plugs 22mm to 25mm



Shutter plugs are used to plug unused holes in Formwork panels or shutter plywood. They come in various sizes to fit various hole sizes on the Formwork panel.

Product code and size:

Product Code	Description
SP21-22mm	Fits 21mm to 22mm holes
SP25mm	Fits 25mm holes

**About Our Joint Former Lightweight, cross-linked, closed cell, expanded Polyethylene joint former**

Joint former is lightweight and used as an expansion / contraction joint former. Joint former is a lightweight, cross-linked, closed cell, expanded Polyethylene joint former. It has particularly good compression qualities with remarkable recovery capacity and is chemical and water resistant. Glue Joint former onto concrete face and cast next section of concrete. A neat and even joint will be formed. Doesn't need bond breaking strip and is compatible with silicone.



**DIRECTIONS FOR USE**

- Ensure all concrete surfaces are free from base grit and dust.
- Apply glue in vertical strips ± 100 mm wide and 25 mm from the top to avoid the tear-off strip from sticking to the concrete face.
- Allow the glue to dry (according to manufacturer's instructions) and then stick Joint former onto the glued concrete face.
- Cast the next section of concrete as required. Take care not to let the wet concrete get behind Joint former as this will result in a wavy joint.
- When the joint sealant is about to be applied, simply peel the tear-off strip out of the formed joint, leaving an even groove of uniform depth for filling with sealant.

**Please Note:** In conjunction with water retaining structures, Joint former must NOT be used where the water head is in excess of 3 metres.

**The correct size to be used depends on the condition of the formwork or type being used:**

**JOINT FORMER PRODUCT CODES AND SIZES**

Product Code	Foam Colour	Width (mm)	Thickness (mm)
JT50	White	50	10
JT80	White	80	10
JT90	White	90	10
JT100	White	100	10
JT110	White	110	10
JT115	White	115	10
JT120	White	120	10
JT125	White	125	10
JT150	White	150	10
JT170	White	170	10
JT175	White	175	10
JT180	White	180	10
JT190	White	190	10
JT200	White	200	10
JT220	White	220	10
JT230	White	230	10
JT250	White	250	10
JT280	White	280	10
JT300	White	300	10
JT340	White	340	10
JT400	White	400	10

**ADVANTAGES**

- Joint former has good compression qualities with good recovery capacity.
- Joint former is supplied with a hinged temporary blocking piece, leaving a clean, neat and perfectly sized groove providing a consistent depth channel for joint sealant.
- Joint former is cut to size, eliminating wastage and cutting on site.
- The Joint former material is flexible and can be used around corners.
- Joint former Excellent resistance to chemicals.
- Joint former is waterproof, does not disintegrate, rot or swell.
- No bond breaker required.

Contact us now on +27 (0)11 310 8660, +27 (0)11 310 7113 or +27 (0)72 459 7063.

You can also email us at [sales@rmcs.com](mailto:sales@rmcs.com)

## About Our Shutter strip Self-adhesive Polyurethane shutter sealing foam strip

Shutter strip is used as a sealing strip for the prevention of grout loss through but joints in metal or wooden formwork. It is made of a polyurethane foam with a adhesive backing strip.



### DIRECTIONS FOR USE

- Ensure that the sides of the shutter panels are free of dirt, base grit, dust or grease oil.
- Apply Shutter strip to the side of the panel by peeling off the release paper and sticking the self-adhesive side to the panel.
- Place the next shutter panel in position firmly against the Shutter strip to ensure that the foam is compressed.

**The correct size to be used depends on the condition of the formwork or type being used:**

### JOINT FORMER PRODUCT CODES AND SIZES

Product Code	Foam Colour	Width (mm)	Thickness (mm)
GS5x20	Grey	5	20
GS10x20	Grey	10	20
GS15x20	Grey	15	20
WS5x20	White	5	20
WS10x20	White	10	20
WS15x20	White	15	20

### ADVANTAGES

- Self-adhesive backing makes our foam seal easy and clean to use.
- Supplied in various widths and thicknesses.
- Water based acrylic adhesive makes Shutterstrip easy to remove after use.

### PHYSICAL PROPERTIES / TECHNICAL DATA

Composition:	Self-adhesive, open cell Polyurethane foam.
Colours:	Grey or White.
Density Grey:	22 - 24 kg/m <sup>3</sup> .
Density White:	5mm width = 23 kg/m <sup>3</sup> &
	10 & 15mm width = 20 kg/m <sup>3</sup> .
Roll size:	10 meters.

Contact us now on +27 (0)11 310 8660, +27 (0)11 310 7113 or +27 (0)72 459 7063. You can also email us at [sales@rmcs.com](mailto:sales@rmcs.com)

## About our KFORM Screed Rail System

See how it works on our KFORM website <http://www.kformsouthafrica.co.za>.



K-FORM UPVC Screed Railing provides the construction industry with an economical, efficient and environmentally friendly alternative to steel and timber formwork.

### Specification

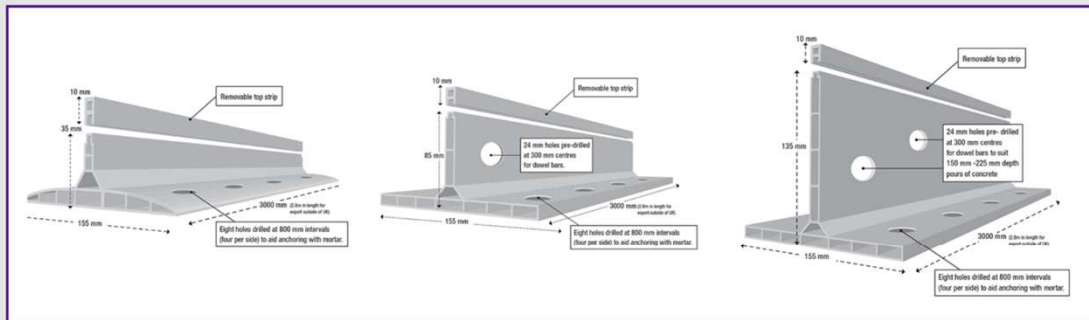
- Allows increase in height of 25mm
- Integrates seamlessly with K-FORM Screed Rails
- Compatible with K-FORM top strip
- Fast and easy clip on design

The K-Form Concrete Formwork System offers a revolutionary and innovative shuttering product that saves the building contractor time and money.

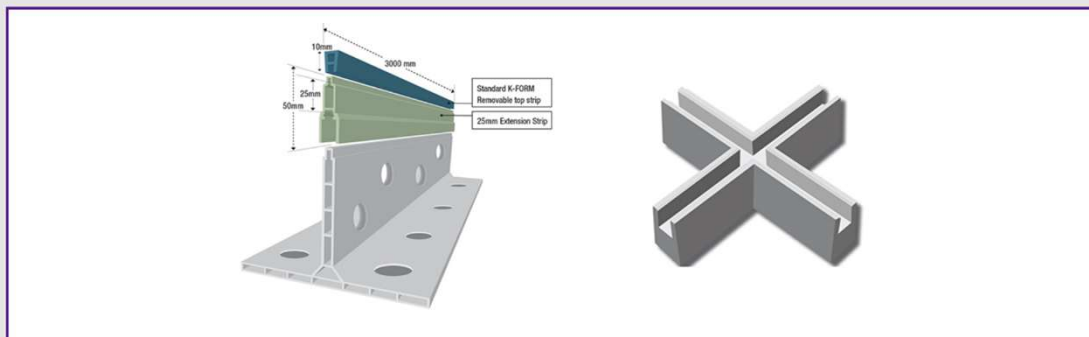
The K-Form plastic concrete shuttering system is so simple and fast to set, just one person can lay several hundred metres of screed rail in an hour.

The K-Form Concrete Formwork System has been utilised by hundreds of customers.

Available in three different sizes suitable for a wide range of specification and applications with a range of accessories to fit your project requirements.



Top Strip Angle Joints integrate seamlessly with K-FORM K85 and K135 Screed Rails. They provide a clean and tidy joint detail at intersections and should be used when it is intended to leave the topstrip in place 155 mm after pouring



Contact us now on +27 (0)11 310 8660, +27 (0)11 310 7113 or +27 (0)72 459 7063. You can also email us at [sales@rmcs.com](mailto:sales@rmcs.com)